



NIGMT
FOUNDATION

ACADEMIC PORTFOLIO



Netra Institute of Geoinformatics Management & Technologies Foundation

The future belongs to those who understand the world beneath their feet. At NIGMT, we craft geospatial leaders – precise in skill, bold in vision, and ready to engineer tomorrow.

“ACADEMIC PARTNERS”



Chaudhary Charan Singh
University Meerut

चौधरी चरण सिंह विश्वविद्यालय
मेरठ

MEERUT
UTTAR PRADESH



चौधरी बंसी लाल विश्वविद्यालय, भिवानी
Chaudhary Bansi Lal University, Bhiwani
(A State University Established Under Haryana Act. 25 of 2014)

BHIWANI
HARYANA



SANGAMTM
UNIVERSITY

where Aspiration meets Opportunity

BHILWARA
RAJASTHAN

Welcome to NIGMT Foundation

Welcome to NIGMT Foundation — India's most trusted institution where passion for geospatial science meets purposeful, industry-driven education. Here, you will master GIS, Remote Sensing, UAV, and Data Science in a dynamic environment built for real-world excellence. NIGMT goes beyond academics — forging your career through powerful industry partnerships, immersive hands-on training, internships, and unmatched placement support. You will leave not just as a graduate, but as a confident, skilled, and future-ready professional poised to lead and inspire.



Welcome to NIGMT Foundation — where passion for geospatial science ignites a journey toward excellence, innovation, and an extraordinary career. Step into a world where advanced technology, visionary education, and real-world training converge to shape the professionals of tomorrow.

Established as India's most trusted institution in Geospatial and Emerging Technologies, NIGMT Foundation offers comprehensive programs in GIS, Remote Sensing, UAV/Drone Technology, LiDAR, Digital Photogrammetry, Data Science, BIM, and GPS. Our highly experienced faculty, next-generation laboratories, and industry-aligned curriculum ensure that every student receives education that is relevant, rigorous, and transformational.

At NIGMT, learning goes far beyond the classroom. Through immersive hands-on training, live industry projects, field exposure, and nationally recognized certifications, we prepare graduates who are not just qualified — but truly industry-ready and globally competitive.

With strong university affiliations and a powerful network of industry partners, NIGMT Foundation bridges the gap between academics and the professional world — opening doors to rewarding careers across government, private, and research sectors.

Join NIGMT Foundation today — and become part of a legacy of excellence where your talent is celebrated, your vision is supported, and your future is built on the strongest foundation.

VISION

To be India's most recognized center of excellence in Geospatial, Drone, and Emerging Technologies — building future-ready professionals equipped with practical mastery, innovative thinking, and industry-leading expertise to decode, shape, and transform the world.

MISSION

- To establish fully-equipped geospatial laboratories and industry-standard infrastructure that deliver immersive, skill-driven learning experiences in a dynamic and motivating environment.
- To recruit and retain passionate, experienced, and industry-connected faculty who inspire the next generation of geospatial professionals and evolve with the changing technological landscape.
- To design industry-aligned curricula that seamlessly integrate theoretical knowledge, advanced technical skills, professional values, and real-world competencies demanded by today's geospatial sector.
- To build a thriving and dynamic ecosystem connecting geospatial industry leaders, academic institutions, government agencies, and civil society for inclusive and sustainable national development.
- To drive meaningful employment opportunities and foster an entrepreneurial spirit among graduates — actively supporting transformative national missions including Make in India, Startup India, and Digital India.

GEOSPATIAL TECHNOLOGY

GT embodies the seamless acquisition, processing, and dissemination of spatially referenced information — encompassing both static and dynamic locational phenomena.



TECHNOLOGIES UNDER GT

• GIS (Geographic Information System)

A Geographic Information System (GIS) for collecting, managing, and visualizing geospatial data.

• Remote sensing

Remote sensing — the observation and analysis of Earth's surface properties from airborne or satellite-based platforms.

• LiDAR (Light Detection and Ranging)

A laser-based remote sensing technique that measures distances by emitting pulsed light to generate precise 3D models of the Earth's surface.

• GPS (Global Positioning System)

A satellite-based positioning system that pinpoints the precise location of objects on the Earth's surface.

• Digital Photogrammetry

a well-established technique for acquiring dense 3D geometric information for real-world objects from stereoscopic image overlap.

• UAV / Drone

An unmanned aerial vehicle operated remotely by a pilot or autonomously via onboard computing systems.

• Geo Data Science + Tool Development

Geospatial data science with GEE and Python — building tools and automating workflows to solve real-world spatial challenges.

APPLICATIONS OF GT

- Climate Change & Disaster Management — Precise advance warnings, risk mapping, and strategic disaster preparedness for resilient communities.
- Earth Observation & Environment — Systematic monitoring of vegetation, water quality, and ecological dynamics for sustainable environmental management.
- Healthcare & Epidemiology — Intelligent disease surveillance, contact tracing, and outbreak mapping to strengthen public health systems.
- Societal Empowerment — Resolving challenges in education, livelihood, and financial inclusion through spatially intelligent, data-driven governance.
- Logistics & Supply Chain — Real-time goods tracking, intelligent routing, and seamless supply chain monitoring across vast networks.
- AI-powered geospatial intelligence for real estate valuation and urban development analysis.

INDIA'S GEOSPATIAL SECTOR

✓ GEOSPATIAL ECONOMY

- The market is projected to grow from approximately ₹10.75 lakh crore in 2026 to about ₹28.38 lakh crore by 2034
- Compound Annual Growth Rate (CAGR) of 12.90% during the forecast period.

✓ National Geospatial Policy 2022

- **Geospatial Data Promotion and Development Committee** (apex body to be formed)
- **DST to be the nodal dept.** of GT; GDPDC will recommend DST
- **Milestones to Achieve:**
By 2030 - High resolution topographical survey and mapping.
By 2035 - National Digital Twin (virtual replica) of major cities/towns.



Digital India's vision strategically harnesses GIS-powered decision support systems to enable data-driven governance and accelerate inclusive national development.



Smart Cities and AMRUT initiatives envision a centralized GIS platform across **500 cities** — integrating planning, development, and maintenance into a unified system.



The National Afforestation Program formally requires Remote Sensing and GIS technologies to drive evidence-based forest planning and ensure rigorous, ongoing project monitoring.



The **National Mission for Clean Ganga** relies on comprehensive spatial data and advanced geospatial analysis to monitor, manage, and restore the ecological health of the entire Ganga river basin.



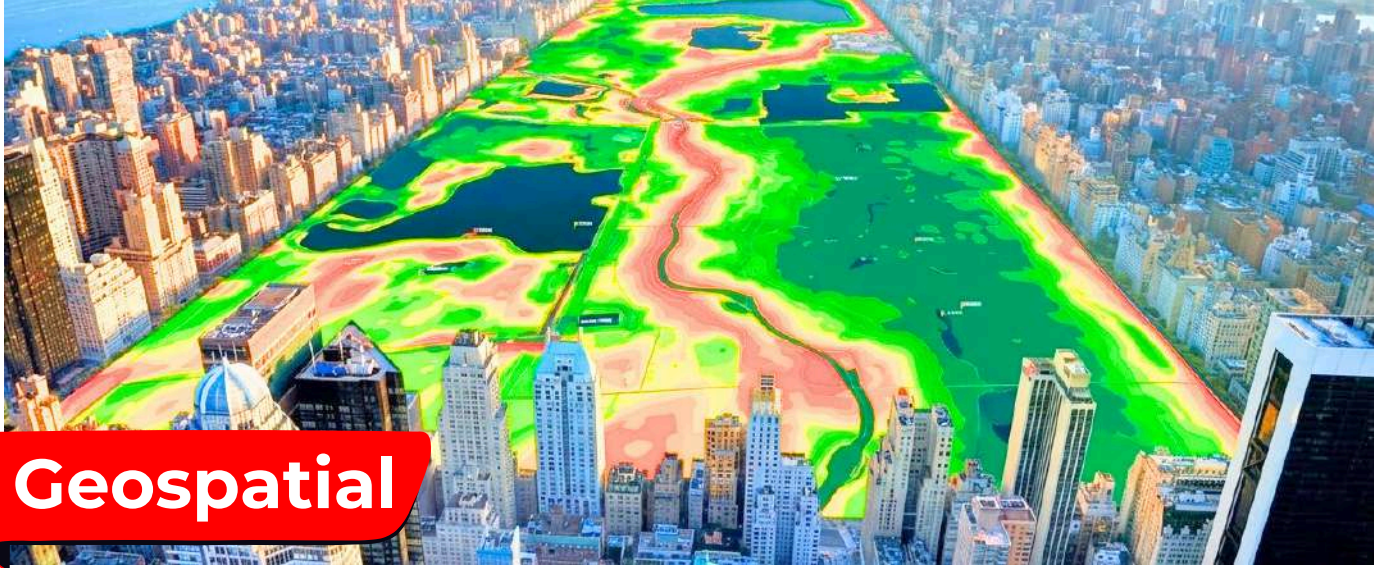
Geospatial technologies offer an integrated, data-driven framework for **river interlinking** projects, leveraging advanced geoinformatics tools to enable precise planning and execution.



The North Eastern Region Urban Development Program extensively employs Geospatial Technologies to drive smarter planning and management of water supply, sewerage, sanitation, and solid waste systems across the region.



The Delhi-Mumbai Industrial Corridor Project strategically integrates Remote Sensing, GIS, and ITES technologies to drive data-informed perspective planning and optimized nodal development, shaping one of India's most ambitious industrial infrastructure initiatives.



We stand as North India's leading centre of excellence, offering an integrated learning experience across seven advanced technologies within a single, comprehensive programme. Designed to meet the demands of today's evolving industry landscape, our curriculum delivers 80% hands-on exposure through intensive practical training, real-time fieldwork, and live project implementation. Students gain direct experience with industry-grade tools, professional workflows, and real-world practices — all guided by seasoned industry mentors. Our career-focused approach emphasizes structured skill development, confidence building, and 100% placement assistance, ensuring every learner is well-prepared to step into high-demand roles with the competence, clarity, and expertise that global industries require.

NIGMT FOUNDATION UNIVERSITY TIE-UP DEGREE & DIPLOMA PROGRAMS

Sr.	Courses	Eligibility	Duration	Fee (Per Semester)
1)	M.Sc. Geoinformatics (Full Time Campus / LMS Program)	Bachelor's Degree in Geography, IT, or any other science related field	2 Years (4 Semesters)	18000/-
2)	M.Sc. Geoinformatics (LMS / Lateral Entry Campus Program)	P.G. Diploma in Geoinformatics / GIS & Remote Sensing with Bachelor's Degree in Geography, IT, or any other science related field.	1 Year (2 Semesters)	18000/-
3)	B.Sc. Geoinformatics (Full Time Campus / LMS Program)	12 th with Science	3 Years (6 Semesters)	30000/-
4)	P.G. Diploma Geoinformatics (Full Time Campus / LMS Program)	Any Graduate	1 Year (2 Semesters)	34500/-
5)	P.G. Diploma GIS & RS (Full Time Campus / LMS Program)	Any Graduate	1 Year (2 Semesters)	25000/-
6)	P.G. Diploma Drone Tech (Weekend Campus / LMS Program)	Any Graduate	1 Year (2 Semesters)	18500/-

NIGMT Professional Diploma & Certification Programs

Sr.	Courses	Eligibility	Duration	(Per Sem) Fee
1)	P.G. Professional Diploma in Geoinformatics 8 Technologies	Geography, Geology, Disaster Management, Environmental Science, IT, ECE, Computer Science, Agriculture, Civil - Engineering, Planning & Architecture, Graduates & Post Graduates	1 Yr. (4 Quarters)	99000/- (Offline) 69000/- (Online) 89000/- (Hybrid)
2)	6 Months Diploma in Geoinformatics 4 Technologies	Geography, Geology, Disaster Management, Environmental Science, IT, ECE, CS, Agriculture, Civil - Engineering, Planning & Architecture, Graduates, Post Graduates & Final Year Students	6 Months	71000/- (Offline) 51000/- (Online) 61000/- (Hybrid)
3)	6 Months Diploma in GIS Development (Full Stack GIS Developer)	Geography, Geology, Disaster Management, Environmental Science, IT, ECE, CS, Agriculture, Civil - Engineering, Graduates, Post Graduates & Final Year Students	6 Months	75000/- (Offline) 55000/- (Online)
4)	3 Months Certification 2 Technologies (GIS & RS)	Any Graduate / Post Graduate / Diploma in Engineering	3 Months	41000/- (Offline) 31000/- (Online) 35000/- (Hybrid)
5)	3 Months Certification 2 Technologies (GIS & LiDAR)	Any Graduate / Post Graduate / Diploma in Engineering	3 Months	41000/- (Offline) 31000/- (Online) 35000/- (Hybrid)
6)	3 Months Certification 2 Technologies (GIS & Digital Photogrammetry)	Any Graduate / Post Graduate / Diploma in Engineering	3 Months	41000/- (Offline) 31000/- (Online) 35000/- (Hybrid)
7)	3 Months Certification 2 Technologies (GIS & Drone Advance Program)	Any Graduate / Post Graduate / Diploma in Engineering	3 Months	41000/- (Offline) 31000/- (Online) 35000/- (Hybrid)
8)	3 Months Certification 2 Technologies (Advance GIS+ Python)	Any Graduate / Post Graduate / Diploma in Engineering	3 Months	41000/- (Offline) 31000/- (Online) 35000/- (Hybrid)
9)	1 Month Certification Choose any 1 Technology (GIS / RS / PHT / LiDAR / Surveying)	Any Graduate / Post Graduate / Diploma in Engineering	1 Month	21000/- (Offline) 15000/- (Online) 17000/- (Hybrid)
10)	1 Month Certification 1 Technology (Drone Data Processing)	Any Graduate / Post Graduate / Diploma in Engineering	1 Month	21000/- (Offline) 15000/- (Online) 17000/- (Hybrid)
11)	1 Week Certification 1 Technology (Drone DGCA Certification)	10 th Pass	1 Week	15000/- (Offline)

Program Overview

One Year Post Graduate Professional Diploma in Geoinformatics

(GIS & Remote Sensing Technology)

Program Overview:

The One Year Post Graduate Professional Diploma in Geoinformatics is designed to build industry-ready skills in GIS, remote sensing, and spatial data analysis. The program combines theoretical concepts with hands-on training using advanced tools, preparing graduates for careers in geospatial technologies, urban planning, environmental management, and infrastructure development.

Program Highlights:

- 8 Advanced Geospatial Technologies Covered
- 80–85% Practical Hands-on Training
- Live Interactive Classes with Recording Facility
- Live Project-Based Training
- 100% Placement Support

Ideal For: Graduates aiming to build a strong professional career in GIS, Remote Sensing, and Geospatial Technologies.

Duration: 1 Year

Dual P.G. Diploma Program in Geoinformatics

(Industry + University Approved Program)

Program Overview:

The Dual P.G. Diploma Program in Geoinformatics is a uniquely designed dual-certification course that provides both academic recognition and industry validation. This integrated approach ensures strong professional credibility and enhanced career opportunities in the rapidly growing geospatial sector.

Program Highlights:

- Industry-Approved Professional Diploma
- University-Approved Academic P.G. Diploma
- Advanced Geospatial Technologies Covered
- 80–85% Practical Hands-on Training
- Live Project-Based Learning
- Pan-India Valid Certification
- 100% Placement Support

Ideal For: Graduates who want both a recognized university qualification and an industry-approved professional certification to strengthen their career prospects in GIS, Remote Sensing, Surveying, Mapping, and Geospatial Technologies.

Duration: 1 Year



Six Months Professional Diploma in Geoinformatics

(GIS - Geographic Information System)

Program Highlights:

- 4 Advanced Geospatial Technologies Covered
- 4 Months of Comprehensive Training
- 2 Months of Hands-on Live Project Training
- Opportunity to Work on Real Live Projects
- 100% Placement Support

Ideal For: Post Graduates, and working professionals who want to quickly build strong technical skills and start a successful career in GIS, Remote Sensing, and Geospatial Technologies.

Duration: 6 Months

Six Months Professional Diploma in Geoinformatics

(Full Stack GIS Developer)

Program Highlights:

- Frontend + Backend GIS Development (Web GIS, APIs, Spatial Databases)
- 4 Months of Comprehensive Training
- 2 Months of Hands-on Live Project Training
- Opportunity to Work on Real Live Projects
- 100% Placement Support

Ideal For: Post Graduates, and working professionals who want to quickly build strong technical skills and start a successful career in GIS, Remote Sensing, and Geospatial Technologies.

Duration: 6 Months

Three Months Professional Certification

(GIS+RS)

Program Highlights:

- 2 Advanced Geospatial Technologies Covered
- 1 Month of Hands-on Live Project Training
- 100% Placement Assistance

Ideal For: Graduates, Post Graduates, job seekers, research scholars, and working professionals who want to quickly gain practical skills in GIS, Remote Sensing, LiDAR, Digital Photogrammetry technologies and enhance their career prospects in the Geospatial industry.

Duration: 3 Months

Three Months Professional Certification

(GIS+LiDAR)

Program Highlights:

- 2 Advanced Geospatial Technologies Covered
- 1 Month of Hands-on Live Project Training
- 100% Placement Assistance

Ideal For: Graduates, Post Graduates, job seekers, research scholars, and working professionals who want to quickly gain practical skills in GIS, Remote Sensing, LiDAR, Digital Photogrammetry technologies and enhance their career prospects in the Geospatial industry.

Duration: 3 Months





Three Months Professional Certification

(GIS+Digital Photogrammetry)

Program Highlights:

- 2 Advanced Geospatial Technologies Covered
- 1 Month of Hands-on Live Project Training
- 100% Placement Assistance

Ideal For: Graduates, Post Graduates, job seekers, research scholars, and working professionals who want to quickly gain practical skills in GIS, Remote Sensing, LiDAR, Digital Photogrammetry technologies and enhance their career prospects in the Geospatial industry.

Duration: 3 Months

Three Months Professional Certification

(GIS+Drone Advance Program)

Program Highlights:

- 2 Advanced Geospatial Technologies Covered
- 1 Month of Hands-on Live Project Training
- 100% Placement Assistance

Ideal For: Graduates, Post Graduates, job seekers, research scholars, and working professionals who want to quickly gain practical skills in GIS, Remote Sensing, LiDAR, Digital Photogrammetry technologies and enhance their career prospects in the Geospatial industry.

Duration: 3 Months

Three Months Professional Certification

(Advance GIS+Python)

Program Highlights:

- 2 Advanced Geospatial Technologies Covered
- 1 Month of Hands-on Live Project Training
- 100% Placement Assistance

Ideal For: Graduates, Post Graduates, job seekers, research scholars, and working professionals who want to quickly gain practical skills in GIS, Remote Sensing, LiDAR, Digital Photogrammetry technologies and enhance their career prospects in the Geospatial industry.

Duration: 3 Months

One Month Professional Certificate Program

(GIS / Remote Sensing / Photogrammetry / LiDAR / Surveying)

Program Highlights:

- Choice of Specialization: GIS / Remote Sensing / Photogrammetry / LiDAR / Surveying
- Industry-Oriented Customized Curriculum
- 70–80% Practical Hands-on Training
- Latest Software & Tools Training
- Flexible Mode (Online / Offline / Hybrid)

Ideal For: Students, research scholars, working professionals, government officials, and corporate teams who want to upgrade their technical skills in a short period with focused, practical learning.

Duration: 1 Month





One Month Professional Certificate Program

(Drone Data Processing)

Program Highlights:

- Integration with GIS software for spatial analysis
- Industry-Oriented Customized Curriculum
- 70–80% Practical Hands-on Training
- Latest Software & Tools Training
- Flexible Mode (Online / Offline / Hybrid)

Ideal For: Students, research scholars, working professionals, government officials, and corporate teams who want to upgrade their technical skills in a short period with focused, practical learning.

Duration: 1 Month

One Week Certification

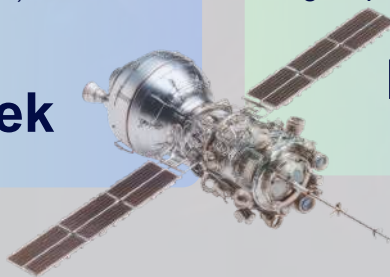
(Drone DGCA Certification)

Program Highlights:

- DGCA-compliant training aligned with regulatory guidelines
- Introduction to aerial data capture & applications
- Short-term intensive training with practical focus

Ideal For: Students interested in drone technology & aviation careers. Anyone looking to gain DGCA-compliant drone operation skills. Surveyors, engineers, and GIS professionals

Duration: 1 Week



Corporate Training Program

(For Working Professionals & Organizations)

Program Overview:

Our Corporate Training Program is specially designed for working professionals, government departments, PSUs, and private organizations seeking to upgrade technical expertise in Geospatial Technologies. The training is practical, customized, and aligned with real industry requirements.

Program Highlights:

- Customized Curriculum Based on Organizational Needs
- Advanced Training in GIS, Remote Sensing, LiDAR, Photogrammetry & Surveying
- Hands-on Practical Sessions with Real-Time Data
- On-site / Online / Hybrid Training Modes
- Industry-Experienced Certified Trainers
- Flexible Scheduling for Working Professionals
- Corporate Certification & Skill Assessment

Ideal For: Working professionals, engineers, planners, surveyors, researchers, and technical teams who want to upgrade their skills, improve productivity, and stay competitive in the evolving geospatial industry.

Duration: Flexible

GIS

GEOGRAPHIC
INFORMATION
SYSTEM

RS

REMOTE
SENSING

GPS

GLOBAL
POSITIONING
SYSTEM

INTERNSHIP PROGRAM

Our comprehensive Geospatial Technologies Internship Program equips Geography Honors students with advanced skills in GIS, Remote Sensing, and GPS, emphasizing hands-on exposure, interdisciplinary learning, and real-world applications in line with NEP 2020. Upon completion, participants will understand these core technologies, perform spatial analysis using modern GIS software, apply geospatial techniques across diverse fields, analyze and visualize data for informed decision-making, and develop/present a GIS-based project to boost research, innovation, and problem-solving skills.

One Month Certification Program

Choose How You Learn

LMS

SELF-PACED
LEARNING

Course Fee 2500/-

ONLINE

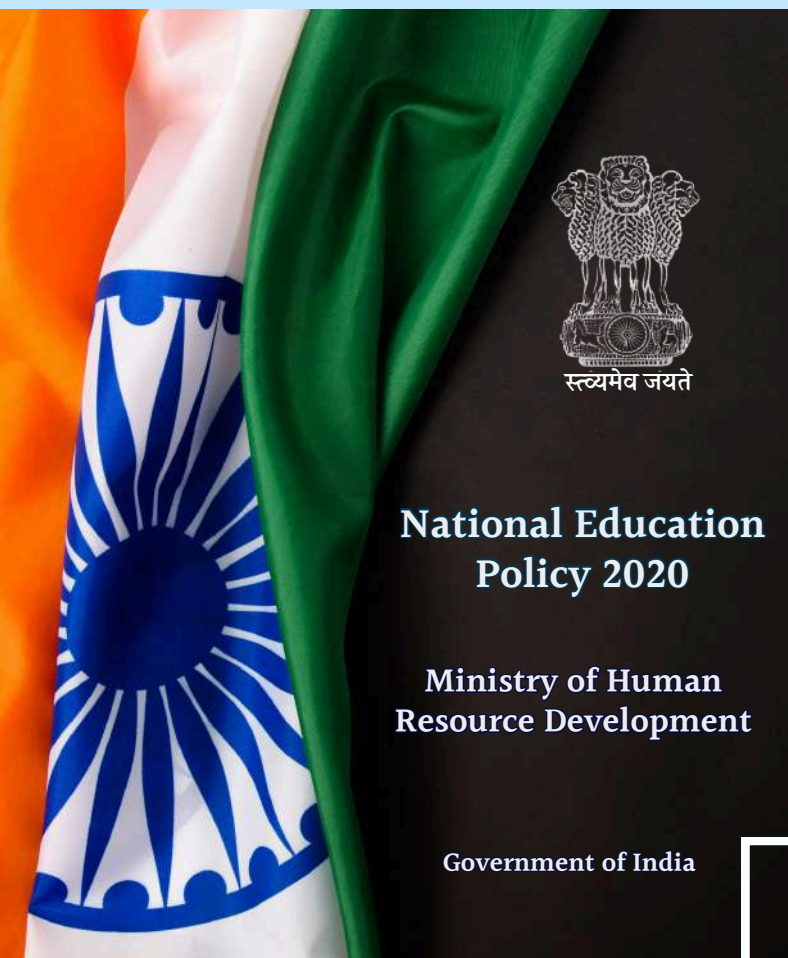
LIVE FROM
ANYWHERE

Course Fee 5000/-

OFFLINE

IN-PERSON
CLASSES

Course Fee 7500/-



CAREER OPPORTUNITIES

Our students are currently working in more than 100 reputed organizations.

SKILL DEVELOPMENT

Mind Enhancement Training Center | Institutional Partnerships | Communication Proficiency Studio | Learning Network Hub | Career Development & Placement Division

STUDENT CELLS

Research & Innovation Wing | Professional Growth & Career Advancement Wing | Student Engagement Hub | Student Support & Well-being Wing | Discipline & Safety Cell

RECENT PLACEMENTS



Uday SK

C.E. Info Systems Ltd.



Saurabh Rawat

Map My India



Shruti

Futuresafe Technologies Pvt. Ltd.



Sourabh

C.E. Info Systems Ltd.



Rakhi

Growever Infra Private Limited



Pushendra Singh

Gaurang Environmental Consultancy



Neelmani Singh

CE Info System



Somya

Aerodyne India



Aakash Singh

ReNew Power



Sangita Dey

Gabion Technologies India PVT. LTD.



Dinesh Negi

MAP MY INDIA



Mehak

Aerodyne India



Jai

Uttarakhand Space Application Centre



Tanu Chaudhary

Futuresafe Technologies



Kanika Bhardwaj

CE Info Systems Ltd.



Aakash Yadav

Map My India



Krishna Kumar Bhatt

CYRAN AI Solutions



Surbhi Balian

Futuresafe Technologies



Vineet

Map My India



Tushar Tyagi

Uttarakhand Space Application Centre

Process of Campus Recruitment

1



Student Registration for Campus Access

2



Pre-Placement Talks by Recruiting Organizations

3



Written Test – Conducted in Online or Offline Mode (as per Company Criteria)

4



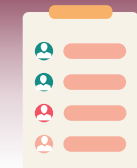
Technical Interview or Group Discussion (as per company selection process)

5



Final HR Interview

6



List of Selected Candidates Shared by the Company

RECENT PLACEMENTS



Nidhi Sharma
Geosky infra Pvt. Ltd.



Sarita
[Deduce Technologies](#)



Ujjwal
Map My India



Rekha
Xentric integrated solutions Pvt. Ltd.



Thutan Peki
Futuresafe Technologies Pvt. Ltd.



Tinku
Applications Centre, Hisar



Sujeet
CE Info System



Vipin
Map My India



Aarti Kumari
Xentric integrated solutions Pvt. Ltd.



Aniket Kholi
C.E Info system



Komal
Mantec Consultants Pvt. Ltd.



Pardeep
Xentric integrated solutions Pvt. Ltd.



Ruby
Got Admission in Ph. D - Geography



Bhuvan Jangra
Xentric integrated solutions Pvt. Ltd.



N Deepak
Arise Information Solutions



Upasana
Deduce Technology



Divya Chauhan
Sophia Girls' College (Autonomous)



Bhupinder Bhati
CE Info System



Pooja
CE Info System



Payal
NET JRF



Sheetal
Aerodyne India



Akshay Arjun Wan
CE Info System



Mani Mala
Got Admission in Ph. D (Silviculture) Forestry



Gauri Negi
Aecons Infotech



Ajay
Start-Up Skyline Geoinformatics



Anuska
NET JRF



Palak
Map My India



Ajay
Start-Up Skyline Geoinformatics



Bharti
Map My India



Amit
CE Info System



Rohit
Map My India



Devashri
NIGMT FOUNDATION



Meenakshi
AECONS INFOTECH



Sheetal
[Aerodyne India](#)



Sneha
Skyline Geoinformatics



Nisha
NET JRF

NIGMT FOUNDATION



TIE-UPS



चौधरी बंसी लाल विश्वविद्यालय, भिवानी
Chaudhary Bansi Lal University, Bhiwani
(A State University Established Under Haryana Act. 25 of 2014)



Chaudhary Charan Singh
University Meerut

चौधरी चरण सिंह विश्वविद्यालय
मेरठ



NATIONAL POST GRADUATE COLLEGE
An Autonomous, CPE & NAAC Grade 'A'
College of University of Lucknow



SANGAMTM
UNIVERSITY



where Aspiration meets Opportunity



RAGHUNATH GIRLS' POST GRADUATE COLLEGE, MEERUT

Affiliated to Chaudhary Charan Singh University, Meerut

NAAC Accredited (IV Cycle) Grade 'B+' (September, 2022)

College with Potential for Excellence status - 2005 & College of Excellence (UGC)-2014



100% Placement Assurance

Our commitment to student success is backed by a robust Career Placement Guarantee Program that seamlessly blends cutting-edge technical skill development, an industry-relevant curriculum, hands-on project experience, expert mentorship, and end-to-end

career support. Through strong partnerships with top-tier organizations, we open doors to rewarding employment pathways, nurturing future leaders, driving innovation, and enabling sustained professional advancement.



ACADEMIC BLOCK

NIGMT Foundation features thoughtfully structured academic wings designed to foster a progressive educational atmosphere. Fully equipped learning spaces provide generous accommodation and are complemented by next-generation digital infrastructure, visual-audio technologies, contemporary electronic resources, and intelligent instructional tools. The institutional facilities encompass purpose-built tutorial rooms, advanced research laboratories, expansive auditoriums, and comprehensively outfitted conference halls, each incorporated with premium acoustics systems to guarantee effective interaction and an engaging scholastic experience.



3D Labs

NIGMT Foundation's world-class 3D Photogrammetry and 2D Processing Laboratories are furnished with high-performance systems, professional-grade applications, and sophisticated mapping technologies, ensuring precise outcomes, streamlined operations, and outstanding hands-on training for learners worldwide.



LIVE PROJECT TRAINING

NIGMT Foundation's Practical Project Training provides learners hands-on experience by involving them in sector-specific assignments within an organized and disciplined environment. Supervised by skilled instructors, students master project designing, execution, reporting, and delivery, while building technical proficiency, interpersonal abilities, and workplace readiness essential for successful professional journeys.



Mock Interviews

NIGMT Foundation's simulated interview sessions offer systematic preparation, professional mentoring, individualized assessments, and authentic recruitment rehearsals, enabling learners to develop self-assurance, strengthen presentation abilities, sharpen competencies, and boost overall employability prospects and professional achievements.



EDUCATIONAL TRIP

NIGMT Foundation's yearly academic excursion provides enriching site experiences, organizational engagement, and interactive knowledge acquisition. Learners develop applied understanding, cultivate self-confidence, collaboration, and workplace competencies while broadening practical awareness, stimulating creativity, professional preparedness, and comprehensive personal development through activity-based education extending beyond conventional institutional boundaries.



HOSTEL & P.G Home Away, From Home

NIGMT Foundation supports learners in securing secure, pleasant, and budget-friendly residential arrangements within a 2 km range, guaranteeing accessibility and complete assistance.

COMPREHENSIVE SUPPORT FOR EVERY LEARNER THROUGH DEDICATED PROGRESS TRACKING

- Consistent communication is maintained with the families of enrolled learners.
- Continuous supervision of students is ensured through a dedicated counselor.
- Learners are organized into compact batches of no more than 10 members.
- A dedicated advisor/faculty coordinator is assigned to every batch to oversee the routine progress and personal development of each individual student.
- Continuous refinement of professional competencies.
- Expert sessions by distinguished industry professionals for learner advancement.
- Hands-on assignments in real-world organizations aligned with student aspirations.
- Practical workplace exposure across industries based on learner preferences.
- Dedicated commitment to fulfilling corporate and business requirements.

SURVEYING TOUR

2019-20



RAMNAGAR - UK

SURVEYING TOUR

2020-21



KUFRI - SHIMLA - HP

SURVEYING TOUR

2021-22



JODHPUR - RJ

SURVEYING TOUR

2022-23



MASHOBRA - SHIMLA - HP

SURVEYING TOUR

2023-24



UDAIPUR - RJ

SURVEYING TOUR

2024-25



DEHRADUN - UK

SURVEYING TOUR

2025-26



JAISALMER - RJ



Netra Institute of Geoinformatics Management & Technologies Foundation

[B-11, First Floor, above State Bank of India, Metro Pillar no. 769, Metro Station Dwarka Mor, New Delhi - 110059](#)

Mobile: +91-8585991286
Phone: +91-11-41685754

Follow us on Social Media

[nigmt.foundation](#)



info@nigmt.org www.learn.nigmt.org
 www.nigmt.org nep@nigmt.org